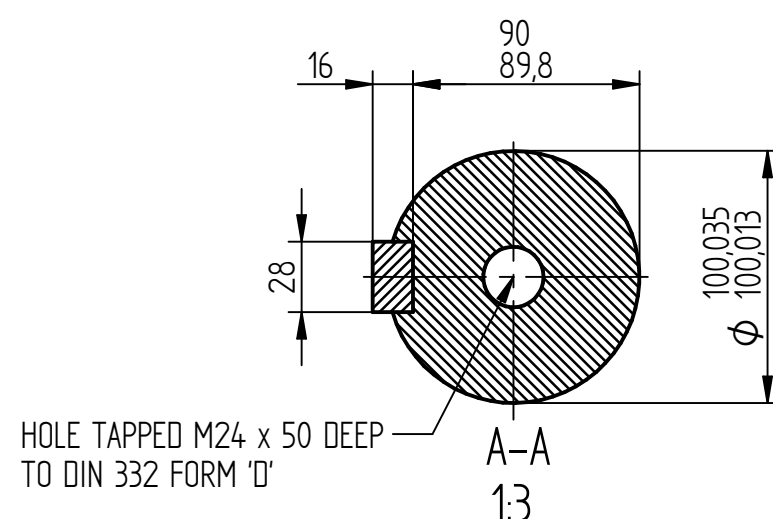
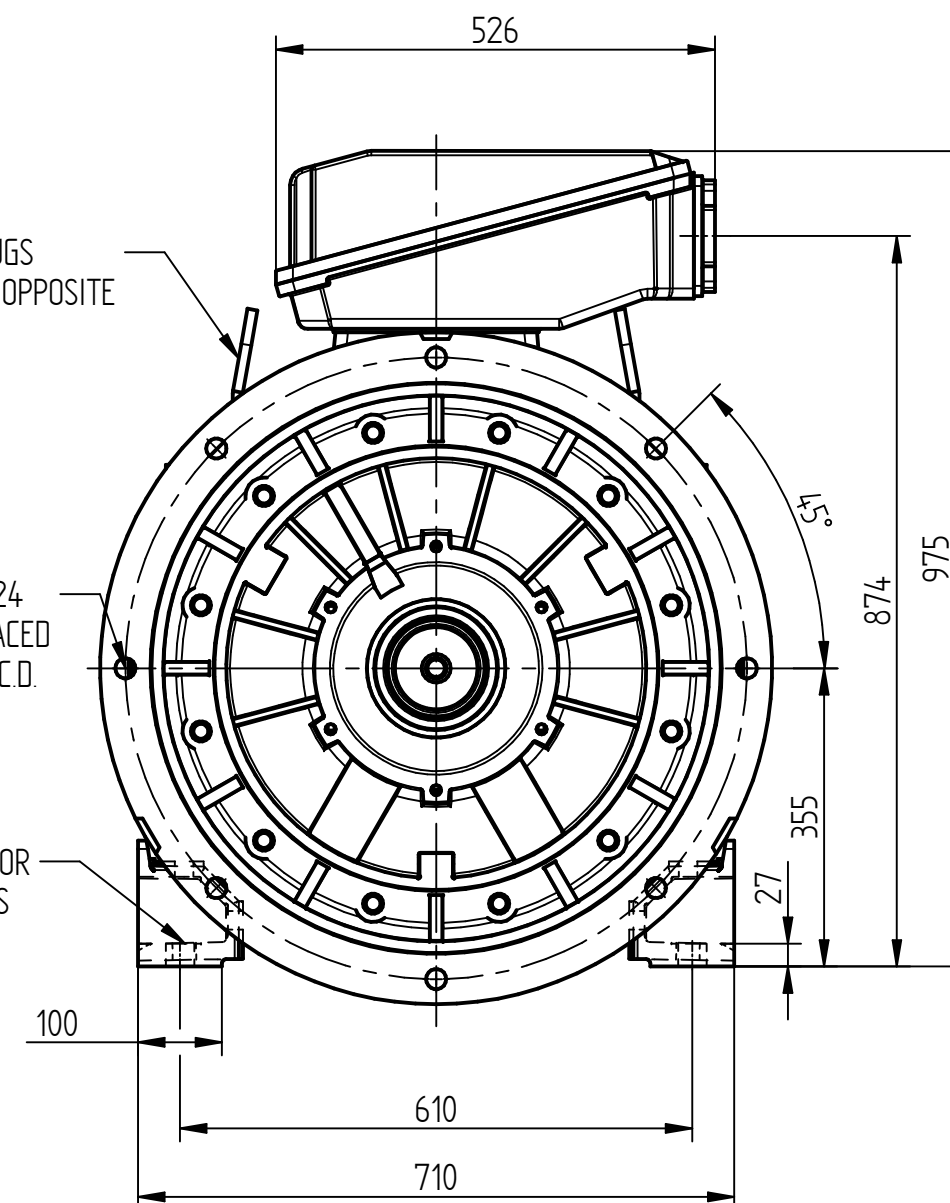


2 LIFTING LUGS
DIAGONALLY OPPOSITE

8 HOLES Φ24
EQUALLY SPACED
ON A 740 P.C.D.

4 HOLES FOR
M24 BOLTS



TERMINAL BOX POSITION:

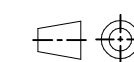
- CAN BE ARRANGED AT EITHER 9, 12 OR 3 O`CLOCK.
- STANDARD TERMINAL BOX POSITION IS 12 O`CLOCK AS SHOWN.

CONDUIT ENTRIES:

- TERMINAL BOX CAN BE ROTATED AT 90° INTERVALS.

ALL MOUNTING DIMENSIONS: ISO 2768-mK ACC TO EN 22768-1/2

ALL DIMENSIONS IN MILLIMETERS



FIRST ANGLE
PROJECTION

**BROOK
CROMPTON**

Produced by ATB Tamel S.A. a company of **ATB**
Technology in Motion

SHEET
SIZE

A3

TITLE:

OUTLINE DIMENSION DRAWING TOTALLY ENCLOSED FAN COOLED
WP-DF355M 4P FRAME D FLANGE AND FOOT MOUNTED MOTOR

	NAME	DATE
DRAWN	SZ	28-06-19
CHECKED	PG	28-06-19
SCALE	1 : 9	

DRG. No. WP-DF355M B35 4P

DRG. REF.

REVISION:

DATE: